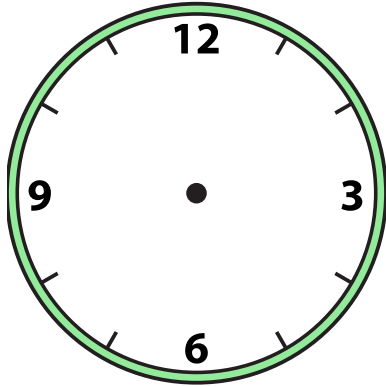




Zeichne den Stunden- und den Minutenzeiger auf die Uhr, sodass er die angezeigte Zeit darstellt.

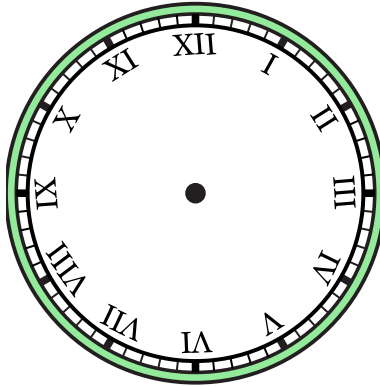
1)

4:00



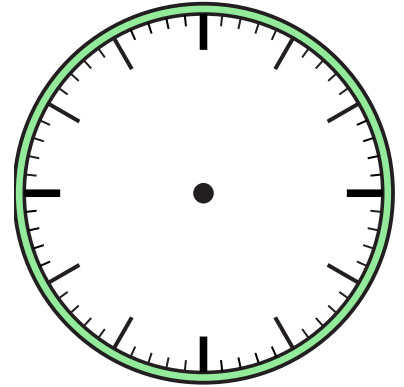
2)

1:00



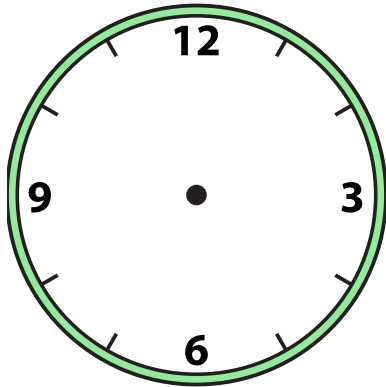
3)

3:00



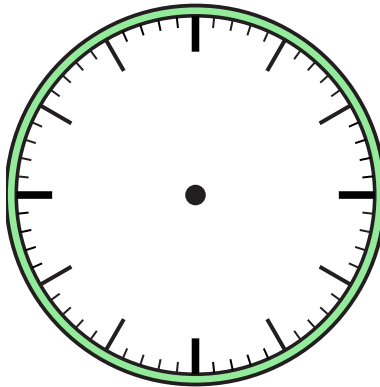
4)

11:00



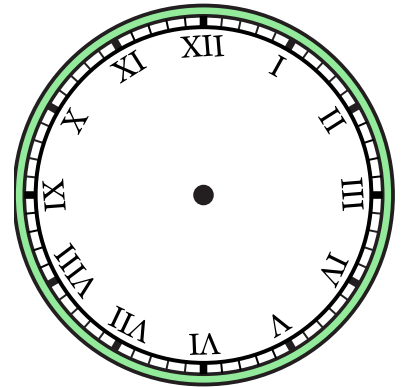
5)

7:30



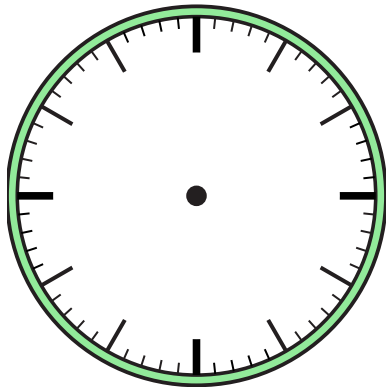
6)

3:30



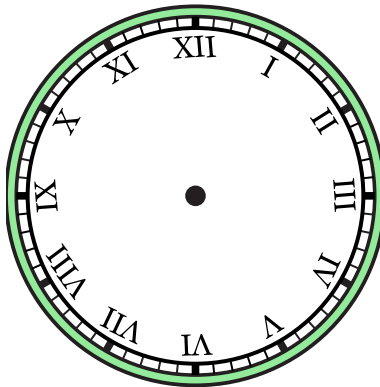
7)

10:30



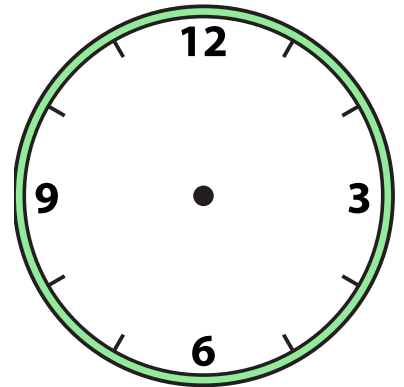
8)

8:30



9)

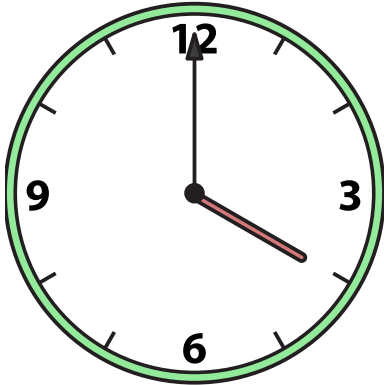
12:30



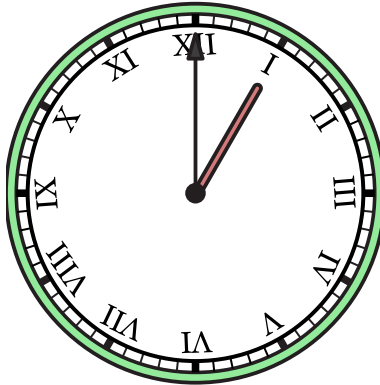


Zeichne den Stunden- und den Minutenzeiger auf die Uhr, sodass er die angezeigte Zeit darstellt.

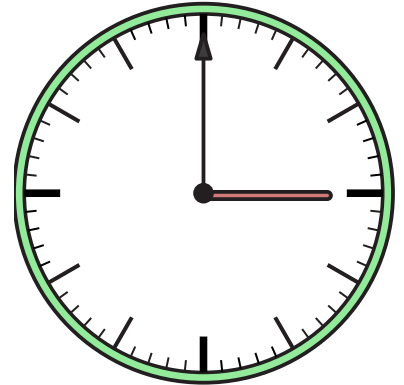
1) 4:00



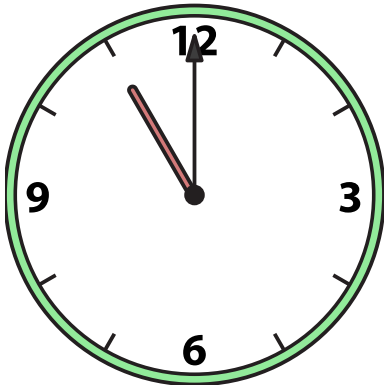
2) 1:00



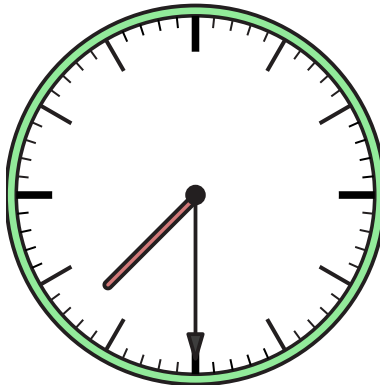
3) 3:00



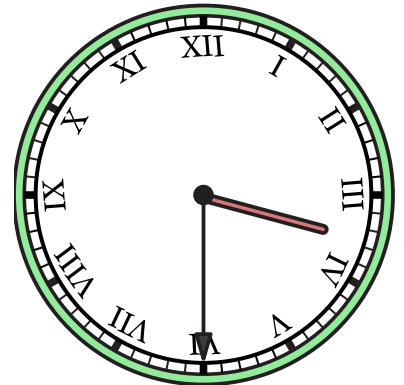
4) 11:00



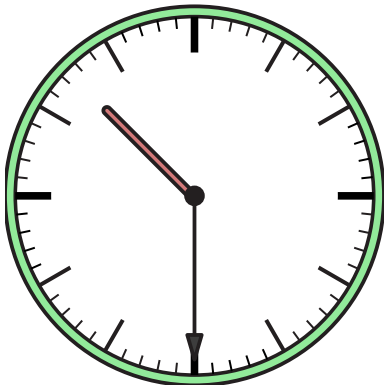
5) 7:30



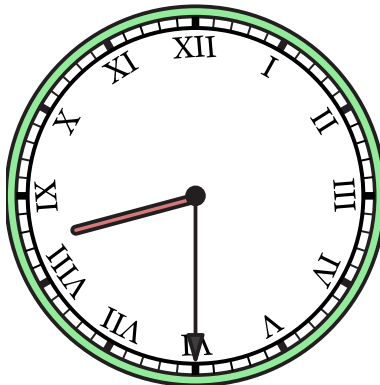
6) 3:30



7) 10:30



8) 8:30



9) 12:30

