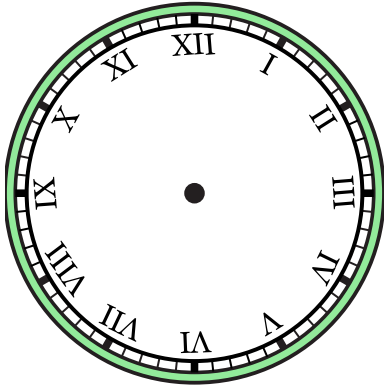




Zeichne den Stunden- und den Minutenzeiger auf die Uhr, sodass er die angezeigte Zeit darstellt.

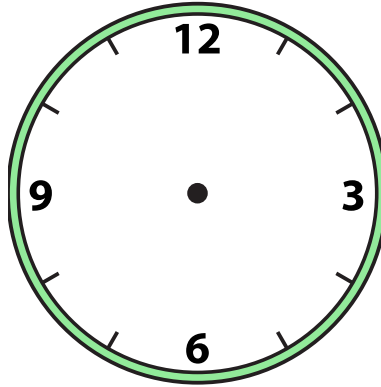
1)

2:30



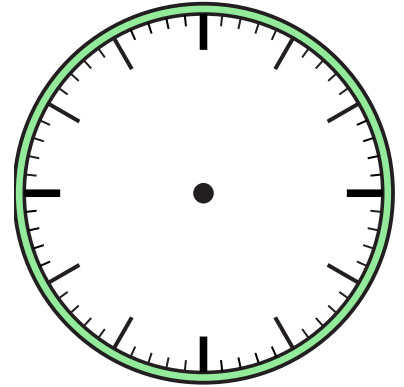
2)

2:00



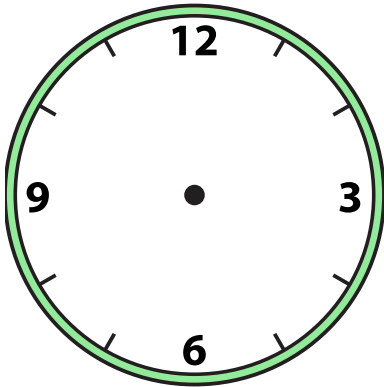
3)

8:00



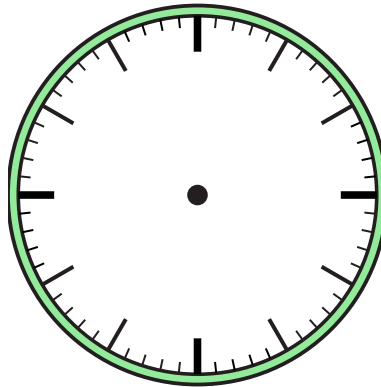
4)

4:00



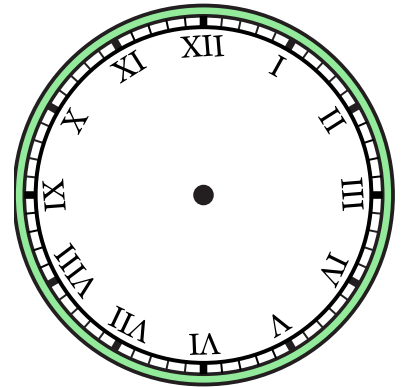
5)

10:30



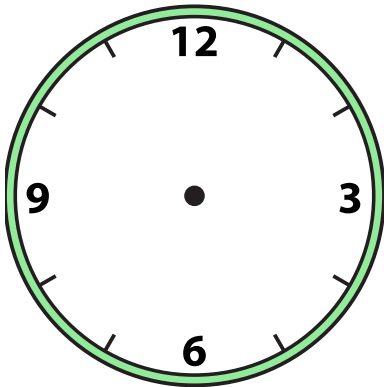
6)

11:00



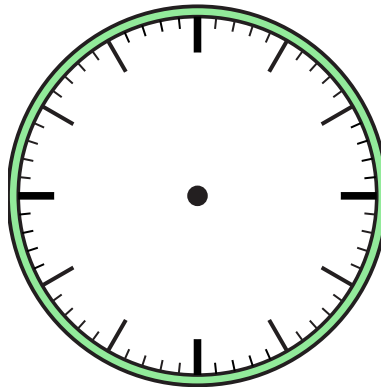
7)

9:30



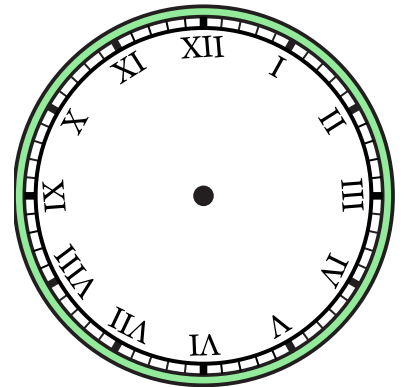
8)

5:30



9)

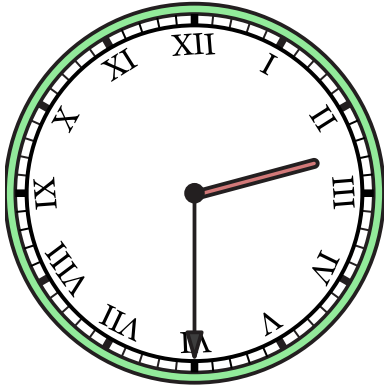
12:00



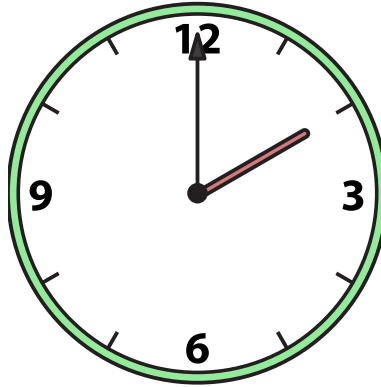


Zeichne den Stunden- und den Minutenzeiger auf die Uhr, sodass er die angezeigte Zeit darstellt.

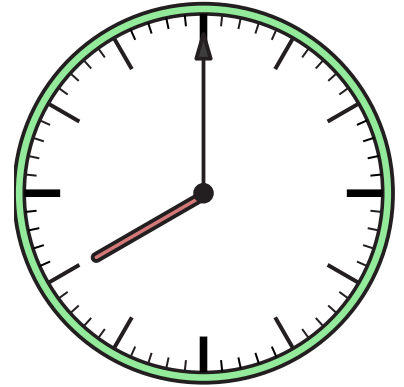
1) 2:30



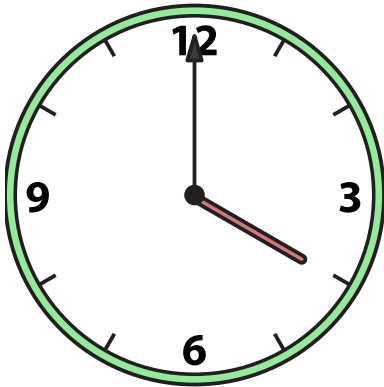
2) 2:00



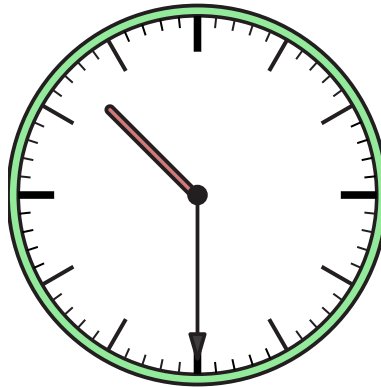
3) 8:00



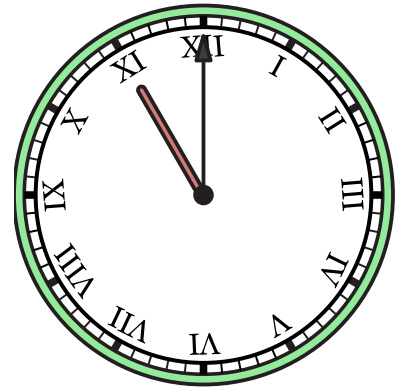
4) 4:00



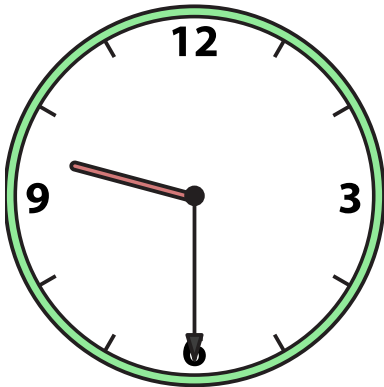
5) 10:30



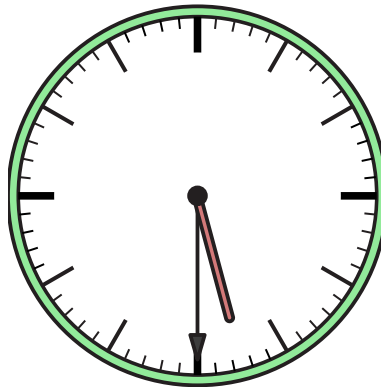
6) 11:00



7) 9:30



8) 5:30



9) 12:00

