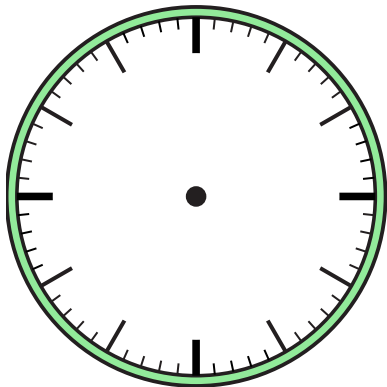




Zeichne den Stunden- und den Minutenzeiger auf die Uhr, sodass er die angezeigte Zeit darstellt.

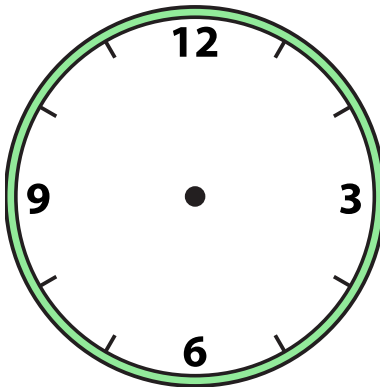
1)

1:00



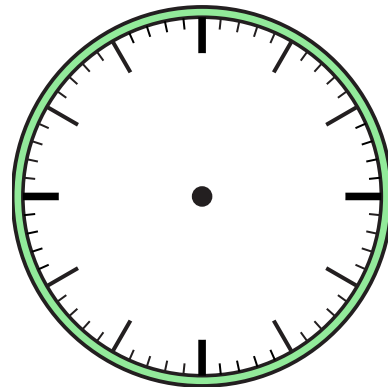
2)

2:30



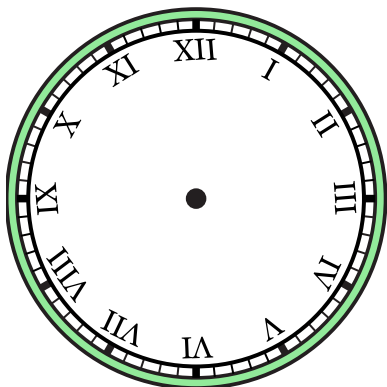
3)

9:00



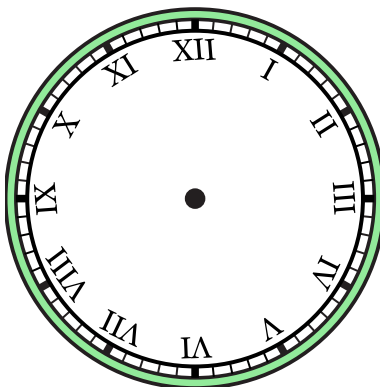
4)

3:30



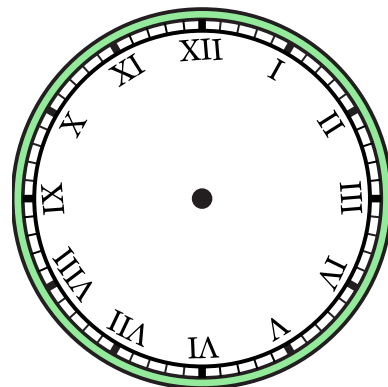
5)

12:00



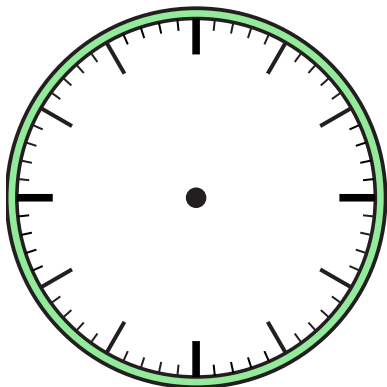
6)

12:30



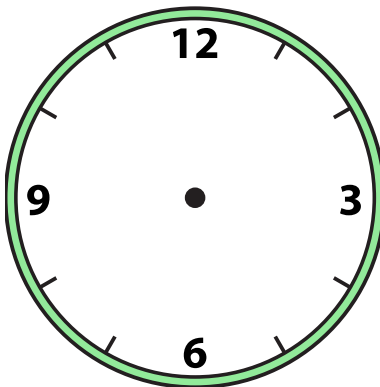
7)

12:00



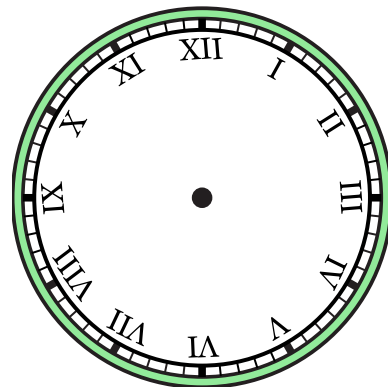
8)

4:30



9)

9:30

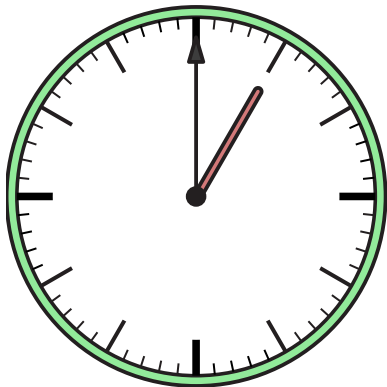




Zeichne den Stunden- und den Minutenzeiger auf die Uhr, sodass er die angezeigte Zeit darstellt.

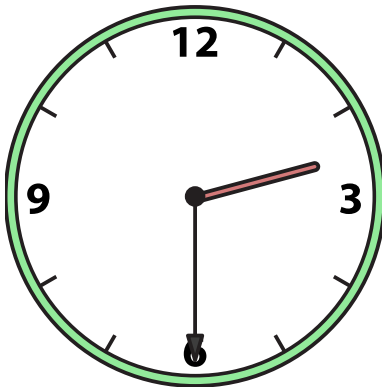
1)

1:00



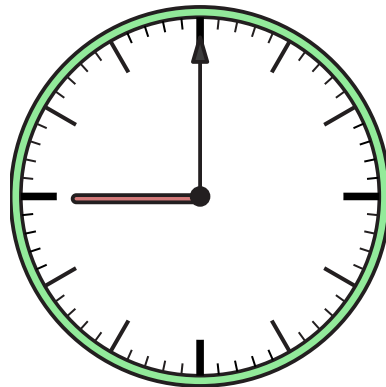
2)

2:30



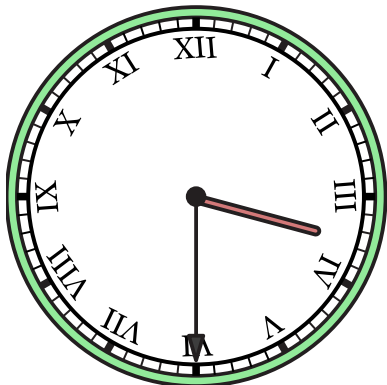
3)

9:00



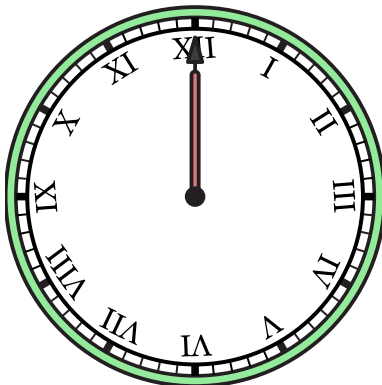
4)

3:30



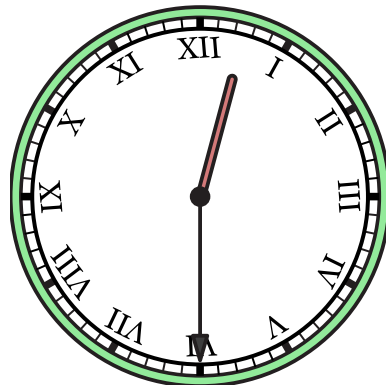
5)

12:00



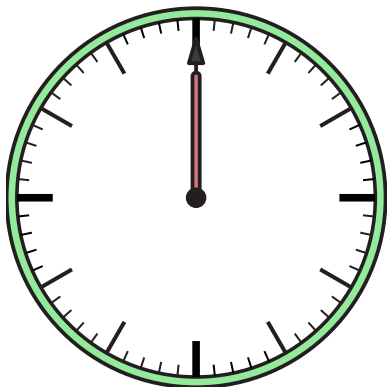
6)

12:30



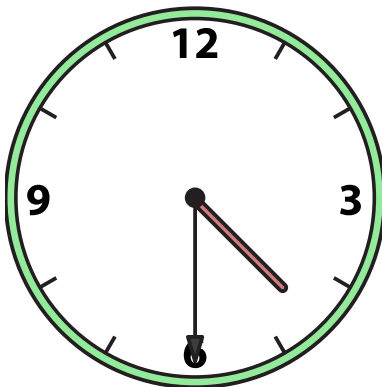
7)

12:00



8)

4:30



9)

9:30

