

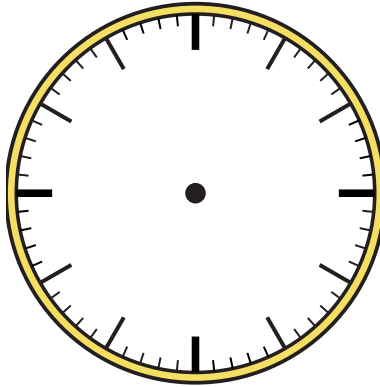


Zeichne den Stunden- und den Minutenzeiger auf die Uhr, sodass er die angezeigte Zeit darstellt.

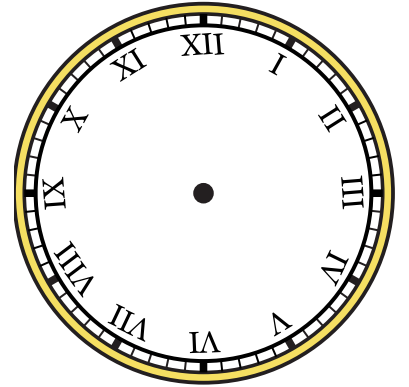
1) 8:45



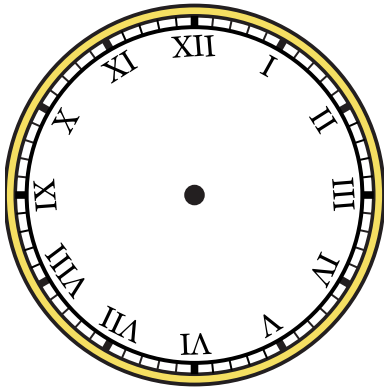
2) 4:45



3) 11:00



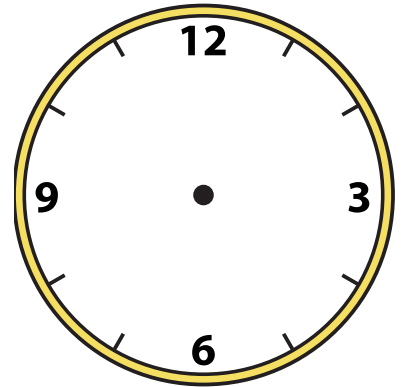
4) 9:15



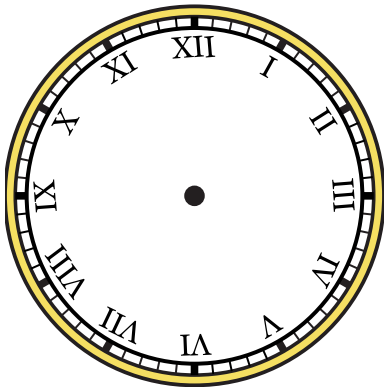
5) 2:30



6) 11:30



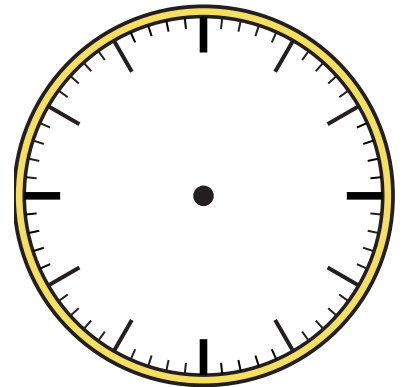
7) 5:00



8) 2:15



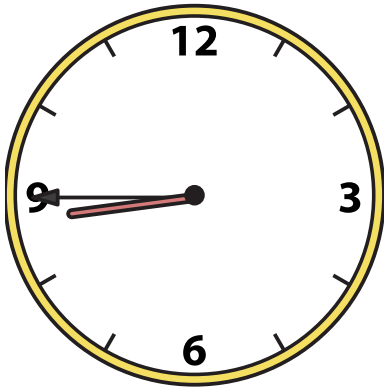
9) 11:15



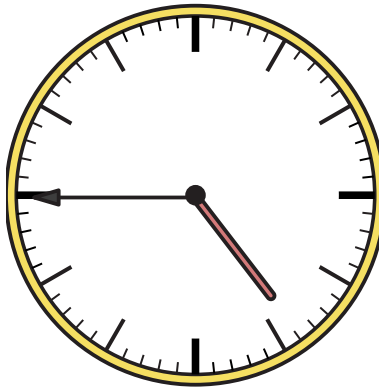


Zeichne den Stunden- und den Minutenzeiger auf die Uhr, sodass er die angezeigte Zeit darstellt.

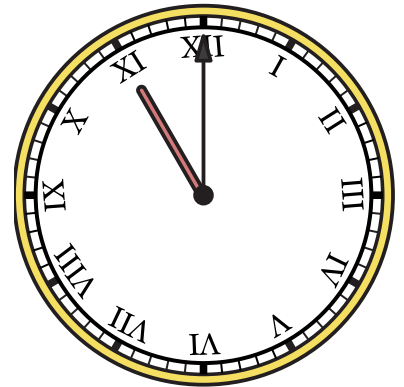
1) 8:45



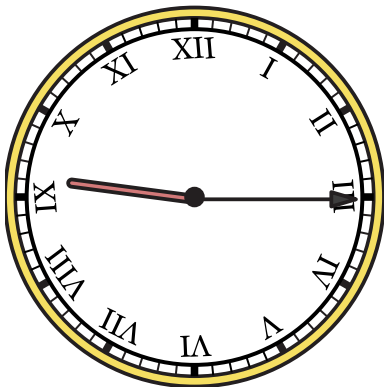
2) 4:45



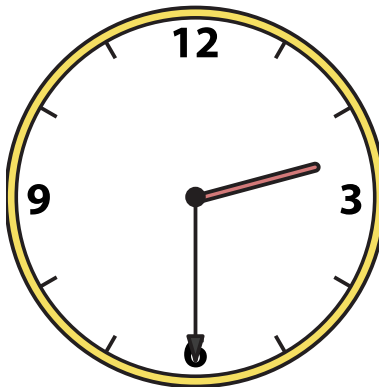
3) 11:00



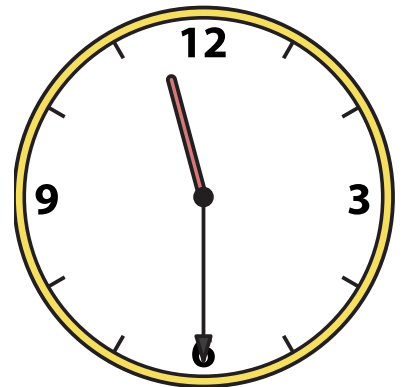
4) 9:15



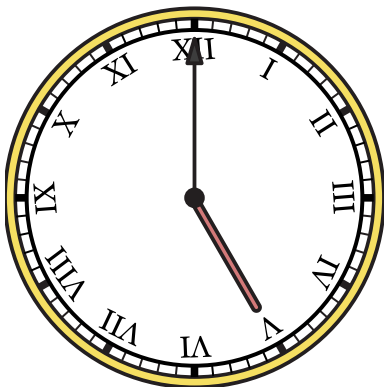
5) 2:30



6) 11:30



7) 5:00



8) 2:15



9) 11:15

