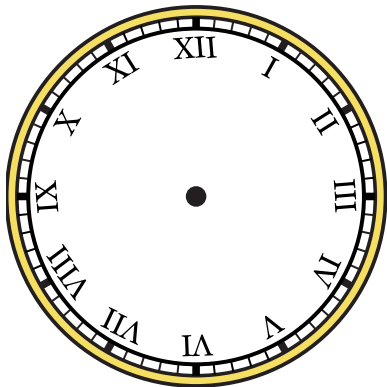




Zeichne den Stunden- und den Minutenzeiger auf die Uhr, sodass er die angezeigte Zeit darstellt.

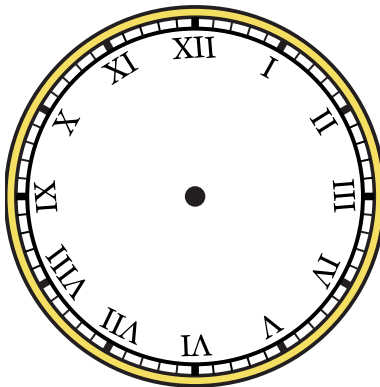
1)

7:00



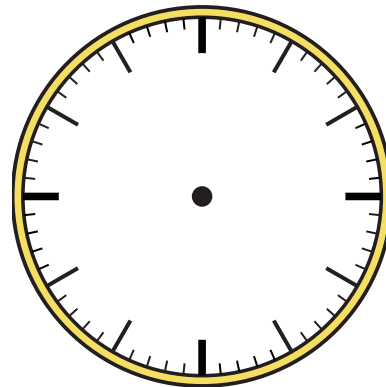
2)

9:15



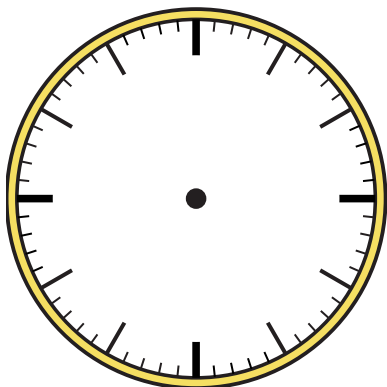
3)

11:00



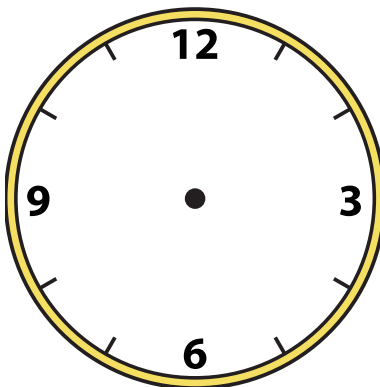
4)

9:30



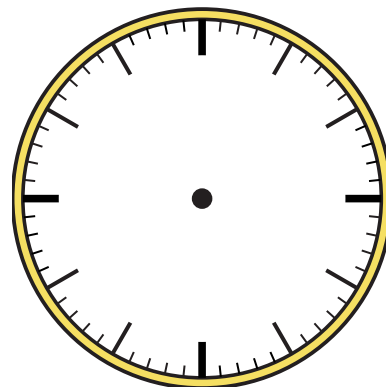
5)

12:30



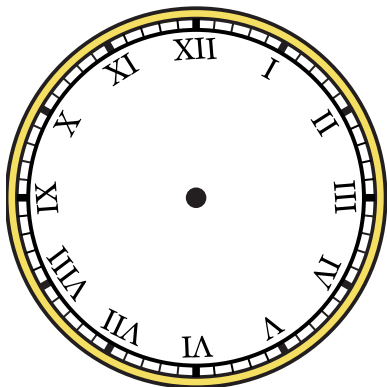
6)

2:00



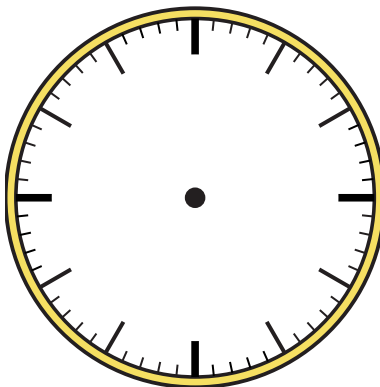
7)

12:15



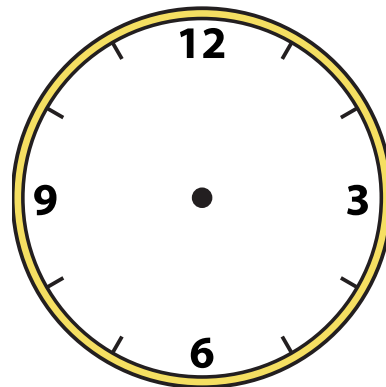
8)

6:30



9)

12:45

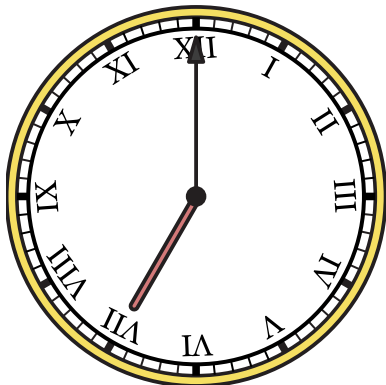




Zeichne den Stunden- und den Minutenzeiger auf die Uhr, sodass er die angezeigte Zeit darstellt.

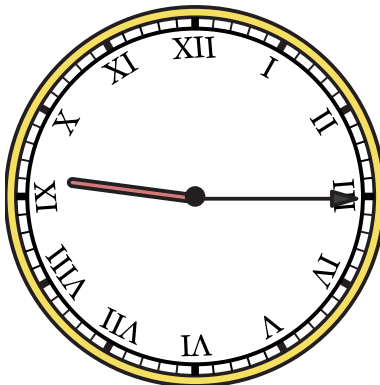
1)

7:00



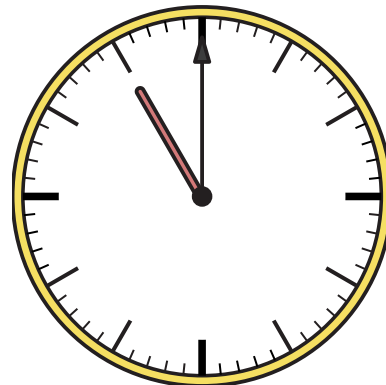
2)

9:15



3)

11:00



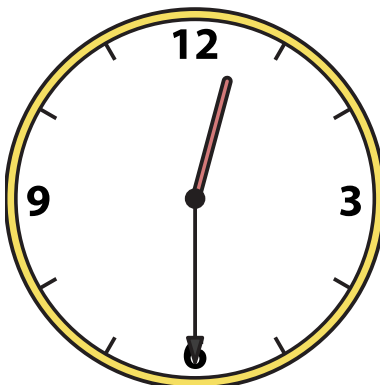
4)

9:30



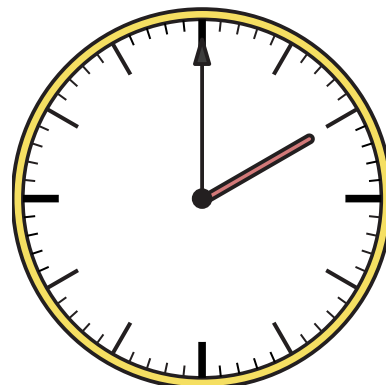
5)

12:30



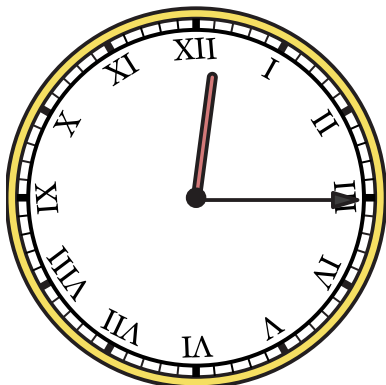
6)

2:00



7)

12:15



8)

6:30



9)

12:45

