



Bestimme, ob der gezeigte Winkel 'mehr', 'weniger' oder 'gleich' 90° ist.

Antworten

Bsp)



Bsp. weniger

1)



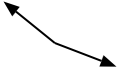
2)



1. _____

2. _____

3)



4)



5)

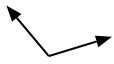


3. _____

4. _____

5. _____

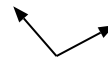
6)



7)



8)

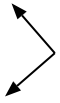


6. _____

7. _____

8. _____

9)



10)



11)

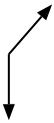


9. _____

10. _____

11. _____

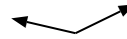
12)



13)



14)

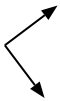


12. _____

13. _____

14. _____

15)



16)



17)



15. _____

16. _____

17. _____

18)



19)



20)



18. _____

19. _____

20. _____



Bestimme, ob der gezeigte Winkel 'mehr', 'weniger' oder 'gleich' 90° ist.

Antworten

Bsp)



1)



2)

Bsp. weniger

3)



4)



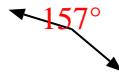
5)

1. weniger

6)



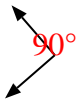
7)



8)

2. weniger

9)



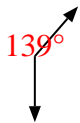
10)



11)

3. mehr

12)



13)



14)

4. gleich

15)



16)



17)

5. weniger

18)



19)



20)

6. mehr7. mehr8. mehr9. gleich10. weniger11. weniger12. mehr13. gleich14. mehr15. gleich16. gleich17. mehr18. gleich19. gleich20. weniger