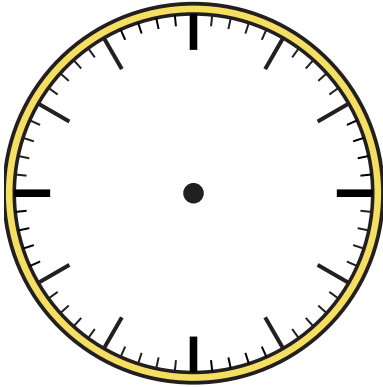




Zeichne den Stunden- und den Minutenzeiger auf die Uhr, sodass er die angezeigte Zeit darstellt.

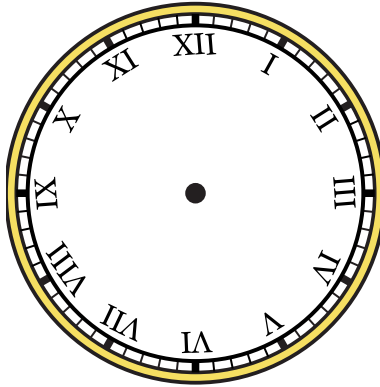
1)

6:05



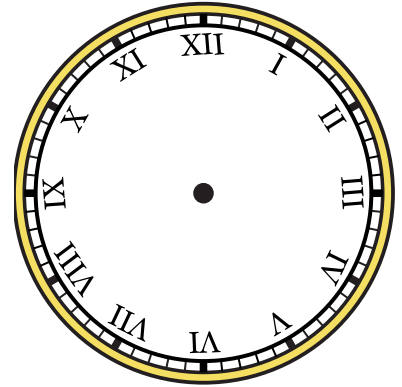
2)

11:40



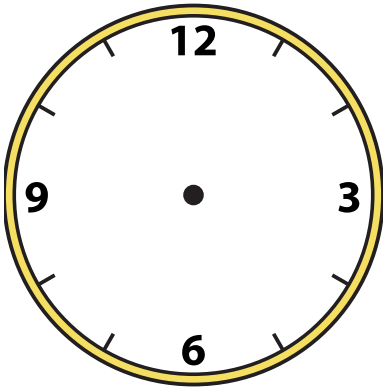
3)

12:25



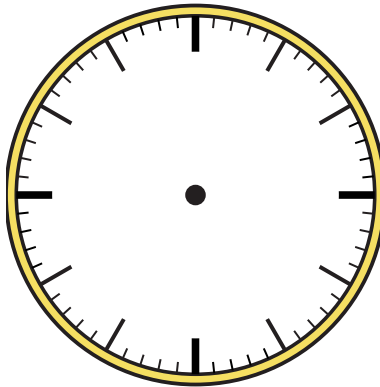
4)

9:15



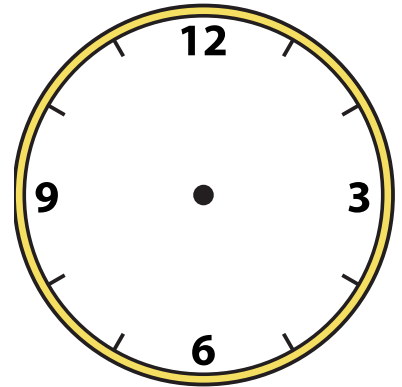
5)

12:00



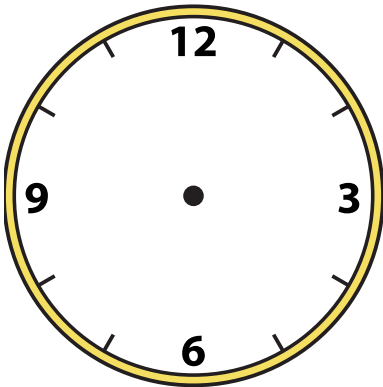
6)

6:50



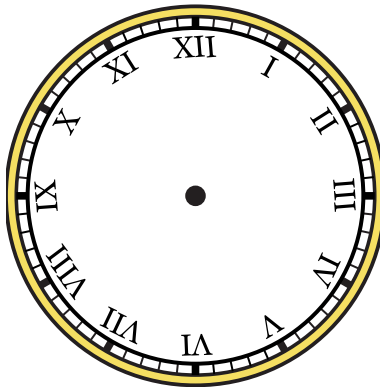
7)

10:30



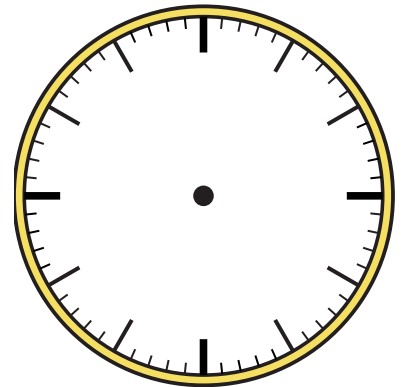
8)

3:05



9)

11:15

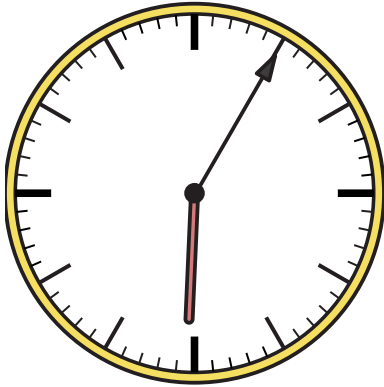




Zeichne den Stunden- und den Minutenzeiger auf die Uhr, sodass er die angezeigte Zeit darstellt.

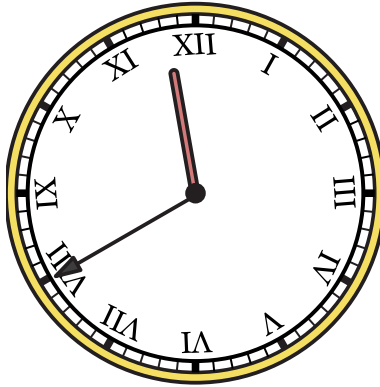
1)

6:05



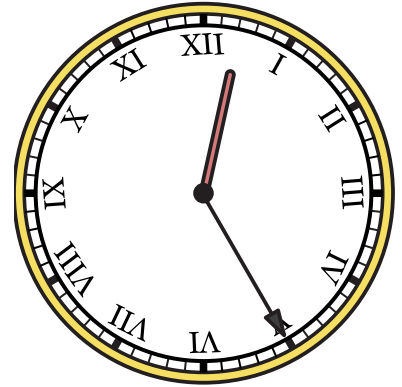
2)

11:40



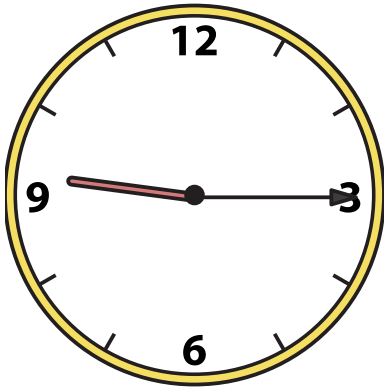
3)

12:25



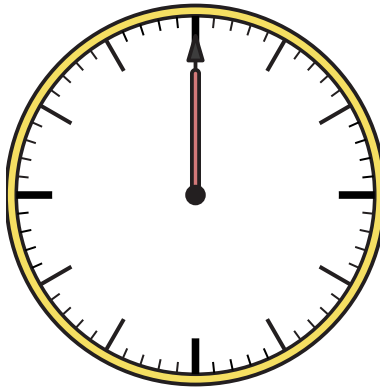
4)

9:15



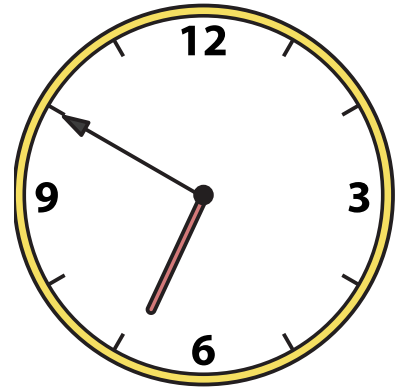
5)

12:00



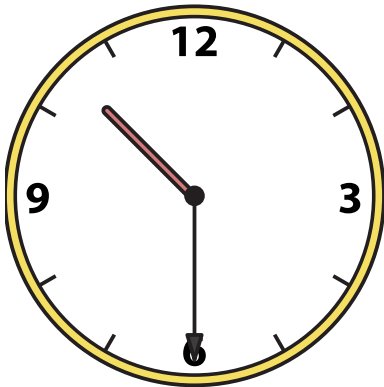
6)

6:50



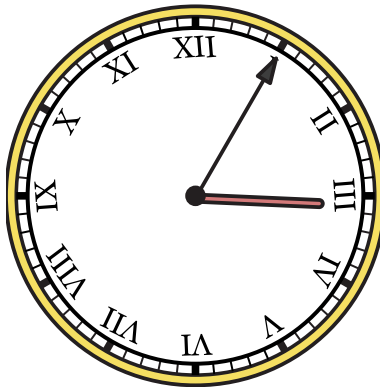
7)

10:30



8)

3:05



9)

11:15

