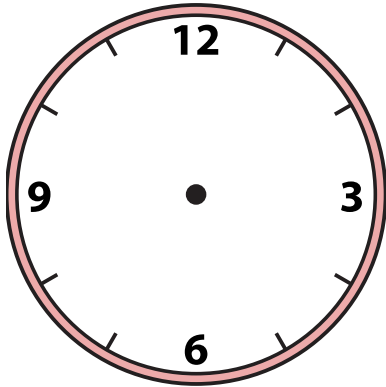




Zeichne den Stunden- und den Minutenzeiger auf die Uhr, sodass er die angezeigte Zeit darstellt.

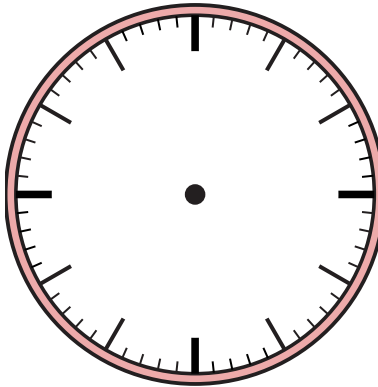
1)

8:01



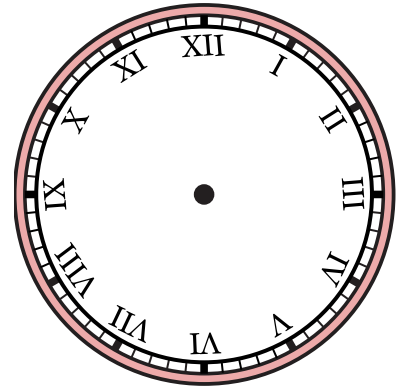
2)

12:16



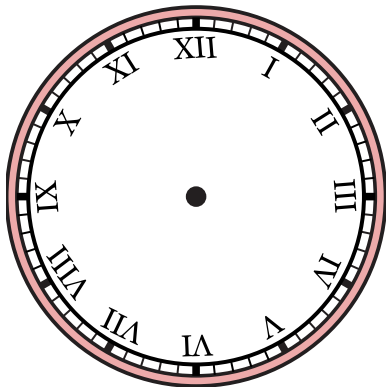
3)

12:36



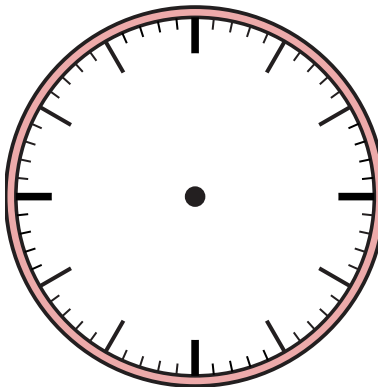
4)

12:49



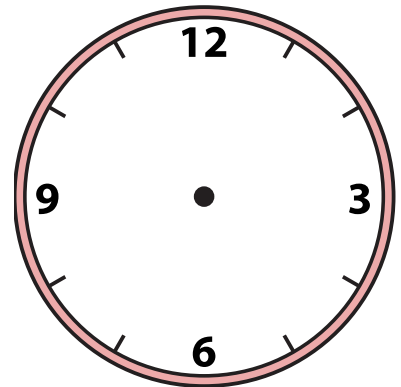
5)

10:36



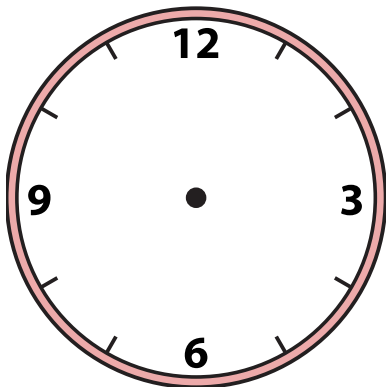
6)

12:45



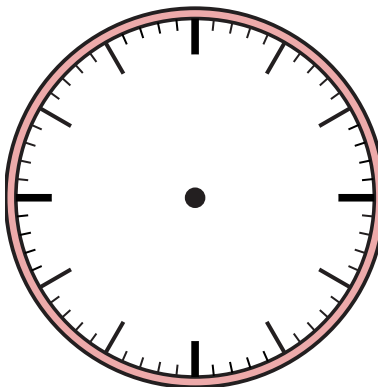
7)

6:57



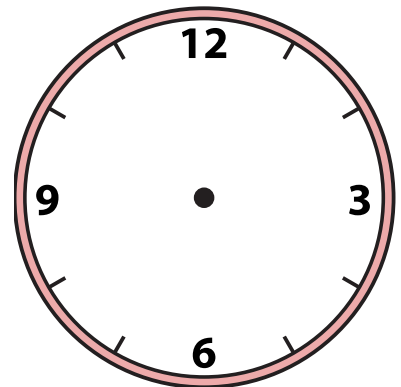
8)

4:02



9)

2:14

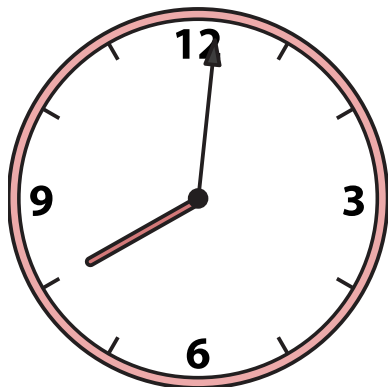




Zeichne den Stunden- und den Minutenzeiger auf die Uhr, sodass er die angezeigte Zeit darstellt.

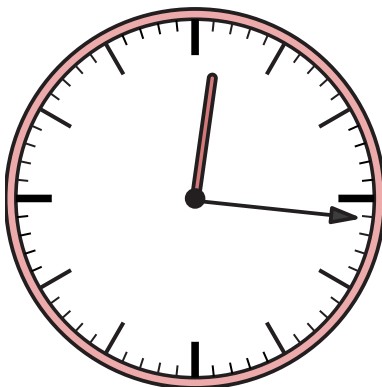
1)

8:01



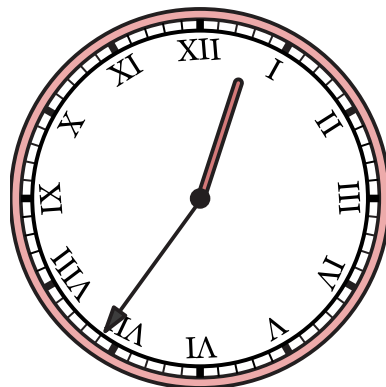
2)

12:16



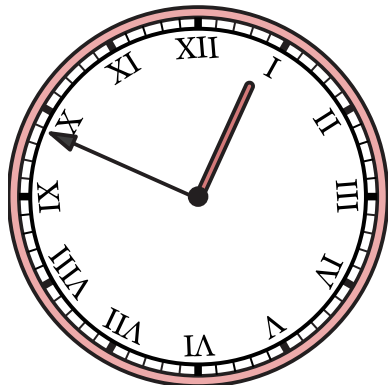
3)

12:36



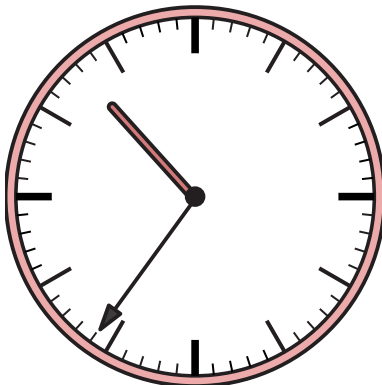
4)

12:49



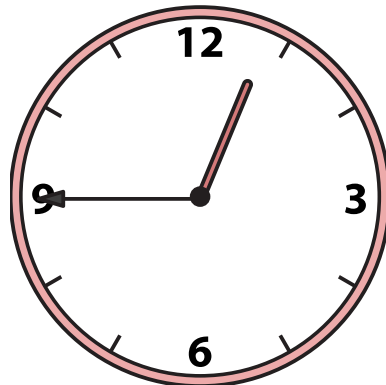
5)

10:36



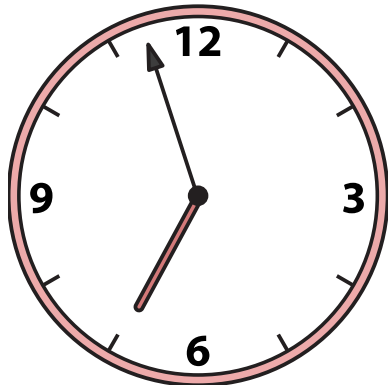
6)

12:45



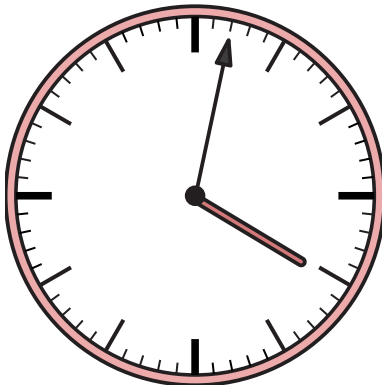
7)

6:57



8)

4:02



9)

2:14

